

JOIKUSPOT LIGHT S60 AND SYMBIAN^3 EDITION



INSTALLATION AND USE

Contents

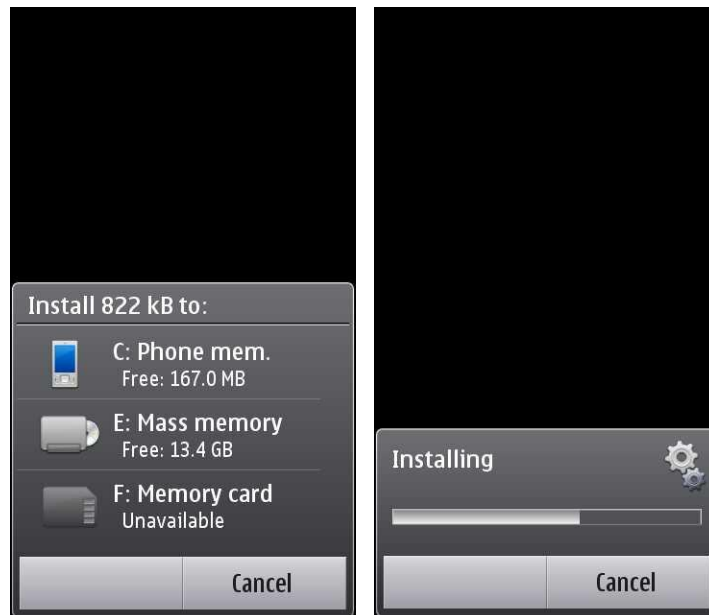
| | |
|---|----|
| 1. Installation | 3 |
| 2. Starting the application | 3 |
| 3. Connecting your laptop to internet via JoikuSpot (Windows XP) | 8 |
| 4. Connecting your laptop to internet via JoikuSpot (Windows Vista) | 10 |
| 5. Connecting your laptop to internet via JoikuSpot (Windows 7) | 12 |
| 6. Connecting other devices/gadgets to internet via JoikuSpot | 13 |
| 7. Tips and tricks | 15 |

1. Installation

If you downloaded JoikuSpot Light SIS file to your PC, first transfer the SIS file (=JoikuSpot Light product) to your compatible Nokia S60 or Symbian^3 phone with Nokia PC Suite or send the SIS file to your phone via Bluetooth and then install the program to your phone.

If you downloaded the file via Mobile download site www.joikuspot.com/light the file installs directly.

When the installation process starts, the phone will ask you, if you want to install the software. Click 'Ok' and select the location where you want the software to be installed. You can choose either your phone memory, mass memory or your external memory card.



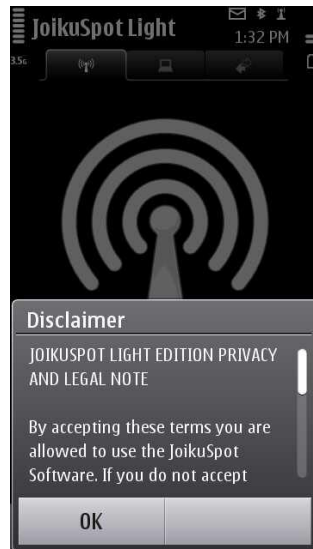
To complete the installation remember to restart your phone. This is needed to adjust the WLAN drivers in your phone.

2. Starting and using JoikuSpot

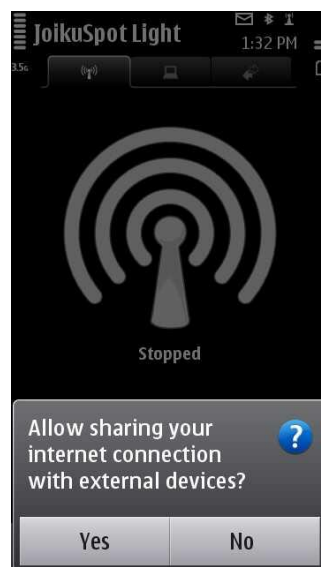
There is also a good video of JoikuSpot Use: (N8 example, connecting device Ipad). Please see the video at <http://www.youtube.com/watch?v=dfSy3VNgoH4> . This is an intuitive way of seeing how JoikuSpot works. The video is of JoikuSpot Premium (Full version), but JoikuSpot Light basic idea (internet connection via tethered WiFi) is the same and as such the video is good learning material for JoikuSpot Light use as well.

When you have successfully installed JoikuSpot on your compatible Nokia S60 or Symbian^3 phone, you can start using it. JoikuSpot can be located under INSTALLATIONS or APPLICATIONS folder in your phone.

Click on the JoikuSpot application icon in your phone and JoikuSpot will start. First time you start Joikuspot, you will be asked to agree the terms of Joikuspot use in order to be allowed to use the application. Read the terms carefully and if you agree, click 'Ok'. The license is intended for personal use.



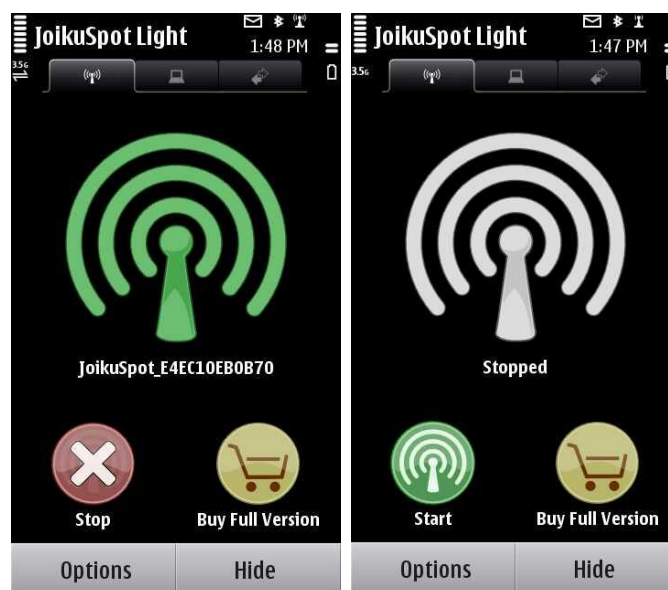
Next JoikuSpot asks: "Allow sharing your internet connection with external devices?". Select 'Yes' to share your phone's 3G internet connection to other devices over WiFi (WLAN). JoikuSpot starts. Your phone turns now to a WiFi HotSpot. You are all set! Simple! Now your laptop or iPad/iPod can discover your phone 3G internet as an ad hoc WiFi network/access point.



When starting JoikuSpot, choose the internet connection you want to share over Wi-Fi. **Please make sure you select your operator's normal 3G internet access point (e.g. Saunalahti Internet).** On the upper left corner you can see the status 'Connecting' and the access point you have chosen.



There are three sheets (information views) in JoikuSpot application. **The first sheet** (main screen) shows if Joikuspot is active or not (connected or stopped). When Joikuspot is active (started), you can see that the icon is green. When Joikuspot is stopped, the icon is white. From the first sheet you can enter Joikuspot Settings, when Joikuspot is in stopped mode. To find Settings, stop Joikuspot by clicking "Stop" and then select "Options" – "Settings".

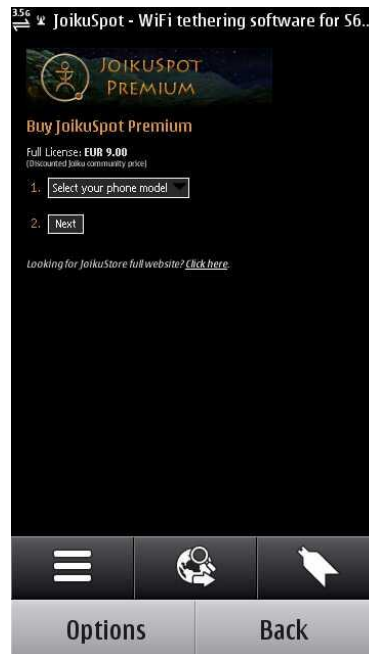


The first sheet also offers a button for **upgrading to Full Version (JoikuSpot Premium)**.



Full Version is commercial by nature and unlocks the full blown feature set of JoikuSpot. JoikuSpot Light is free and thus has limited set of functionality. Full version enriches the user experience by offering the complete internet protocol stack (=complete internet experience inclusive of using e.g. email clients, VPN tunnels, messenger protocols etc.). JoikuSpot Light only comes with HTTP/HTTPS which are good for normal internet browsing, but e.g. Outlook email client can not be used. In addition Premium will offer connection security, which enables you to lock your HotSpot from open forum use with a password. Finally, Premium Settings are adjustable and you can e.g. name your HotSpot freely, define defaulted operator IAPs (internet access point) and get rid of the first web browser landing page.

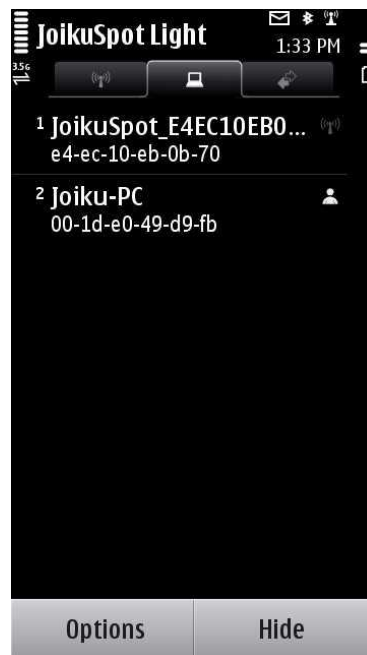
Clicking the Buy Full Version takes you to our easy-to-use mobile shopping basket via your phones mobile browser. Follow the shopping basket instructions to complete the upgrade. We use Paypal processing to guarantee secure payment. You do not need to have Paypal account as the process supports major credit and debit cards. After the payment is complete the Premium Edition downloads and installs automatically to your phone. If you want two licenses to e.g. your second phone, please use this link in your mobile phones browser to enter the JoikuSpot Premium mobile shopping basket: www.joikushop.com/mobile



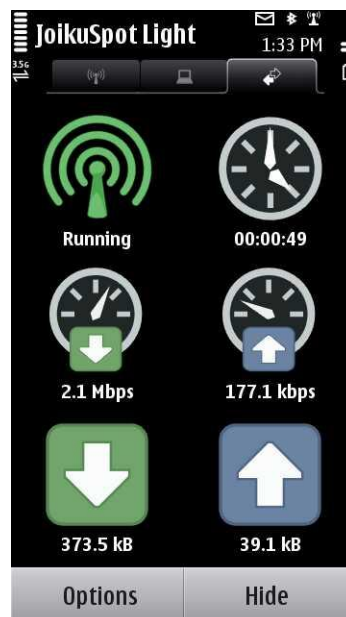
www.joikushop.com/mobile for Premium upgrades

By registering your email at www.joiku.com web site you shall get updates on new releases and campaigned offerings.

The second sheet is the connected clients sheet and it indicates successfully connected external devices to your JoikuSpot access point (e.g. PC, iPod, iPad, Nokia N95 phone).



The third sheet is the connection status view and it informs you e.g. the duration of the internet session as well as the amount of through-traffic (data consumption) and speed of your operator mobile network throughput.



JoikuSpot Settings can be located under OPTIONS menu, when JoikuSpot is in stopped mode. Under Options menu you will also find e.g. JoikuSpot HELP and ABOUT.

In JoikuSpot Light most of the settings are disabled, and you would need the JoikuSpot Premium Edition to adjust most of the client settings. Such settings include security settings (connection encryption and password), battery threshold warnings, landing page on/off, HotSpot naming (SSID) and default IAP definition. To get access to these useful settings, please upgrade to JoikuSpot Premium at www.joikushop.com/mobile.

Now that you have learned the basic functions of the JoikuSpot Light mobile client, it is time to take a look what you can do with a connected JoikuSpot. Your phone is now a WiFi HotSpot (open one) and this means that you can connect other devices like laptops to internet via your JoikuSpot phone 3G internet access point.

The next sections describe the most common use cases starting from laptops



3. Connecting your laptop to internet via JoikuSpot (Windows XP)

Once your JoikuSpot is started (active), you can take any WiFi/WLAN device like laptop, iPad, iPod, iPhone, iPod Touch, another mobile phone with WLAN, WLAN camera etc. and connect them to internet via your JoikuSpot phone WiFi network. **The connecting device (e.g. laptop) needs to support ad hoc WLAN networks.** This is required as Symbian OS platform does not contain support for WLAN infrastructure mode. Multiple devices can connect in parallel and share the JoikuSpot provided mobile internet bandwidth. Connecting laptops or other WLAN devices is extremely easy. Simply click WiFi networks in your laptop, discover your JoikuSpot WiFi network and click 'Connect'. Then open your browser and enjoy JoikuSpot Internet.

Steps to connect:

1. Open your laptop and make sure your WLAN/Wifi is turned on. Choose Wifi networks (typically Windows Wifi icon is displayed in the lower hand right corner bar).
2. Click “Refresh network list”. Your computer should now discover the open JoikuSpot Wifi connection, if JoikuSpot is active. Click the JoikuSpot connection to connect to the web.

If JoikuSpot is not discovered by your computer, make sure JoikuSpot is in “connected” mode.

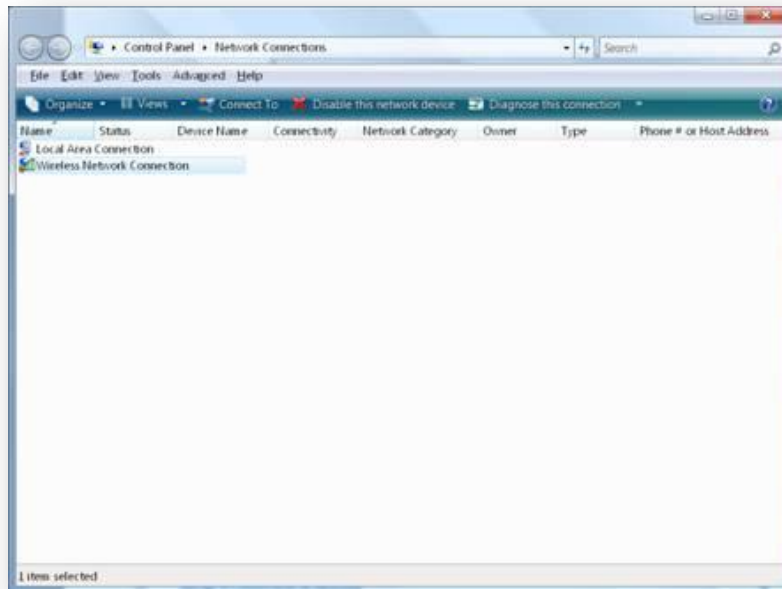


Your computer will discover the JoikuSpot connection. Click on the JoikuSpot network to connect.

3. Open your web browser and start surfing.
4. Please note that your HotSpot (JoikuSpot Light) is an open wifi hotspot visible to anyone within close proximity. Therefore anyone nearby with WiFi can access your JoikuSpot 3G internet and consume mobile data under your mobile data subscription. Please pay special attention to this if you are billed by bits or while roaming. We highly recommend securing your HotSpot by upgrading to JoikuSpot Premium and setting the encryption and password on.

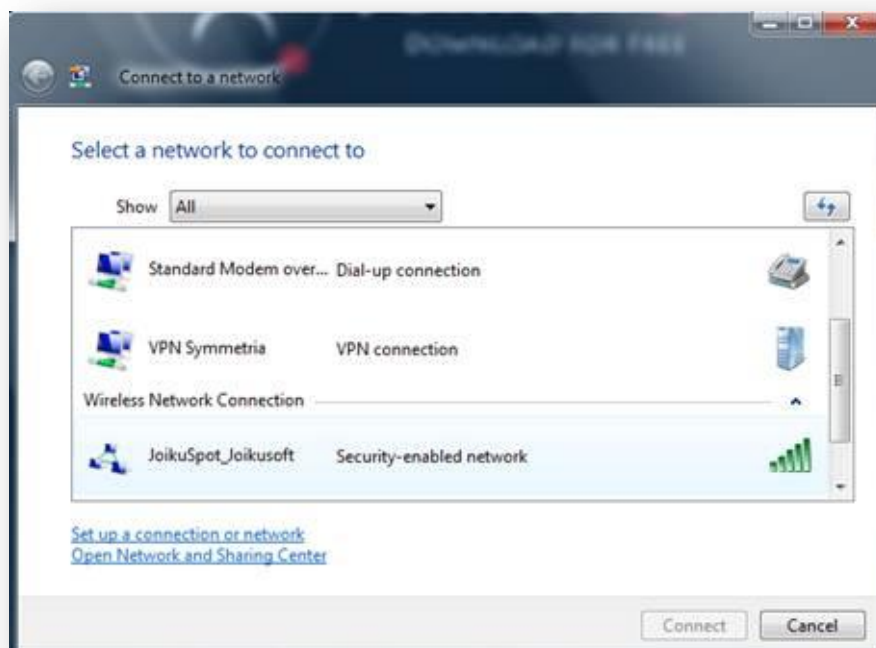
4. Connecting your laptop to internet via JoikuSpot (Windows Vista)

1. Select "Start > Settings > Network connections > Wireless Network Connection"



Use the "Wireless Network Connection" application to make the connection

2. Click "refresh" icon and select JoikuSpot.



By refreshing the available wireless networks your computer will discover the JoikuSpot. Make sure the JoikuSpot is connected.

JoikuSpot is an "ad hoc" network and Windows VISTA is likely to give you this type of a "warning message". Select Connect Anyway in case you want to establish the connection via JoikuSpot.

3. Check that 'Save this network' is selected and close. This will help you connect automatically next time.

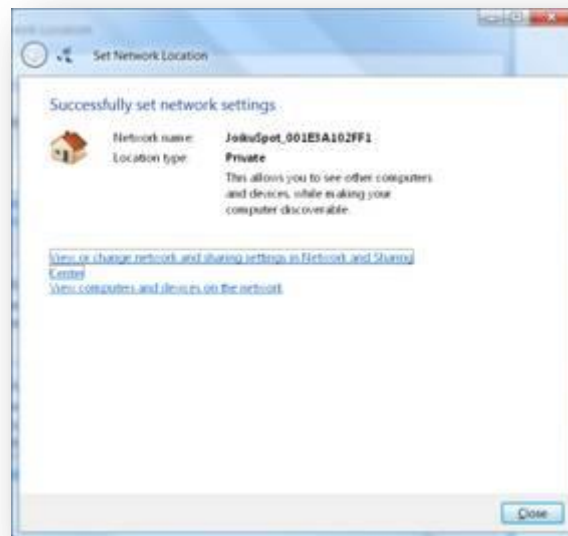


You will get this message to indicate the successful connection via JoikuSpot. Click "Save this network" in case you want to store it for future usage.

4. Next Windows Vista will ask your location. Choose "Home".



5. Further on, click close. The network is now saved. (You don't have to repeat this step after the first time if you stored the network)

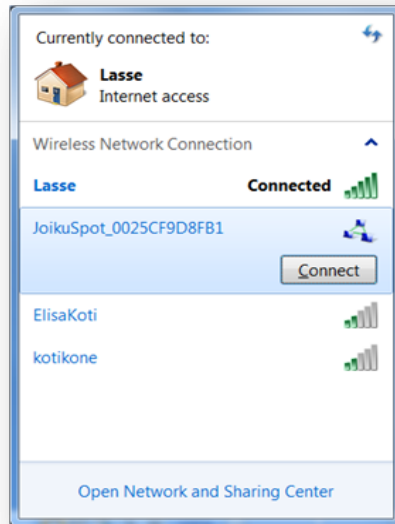


Your network is now saved and you can close the Wireless Network application.

6. Open your web browser and start surfing.
7. Please note that your HotSpot (JoikuSpot Light) is an open wifi hotspot visible to anyone within close proximity. Therefore anyone nearby with WiFi can access your JoikuSpot 3G internet and consume mobile data under your mobile data subscription. Please pay special attention to this if you are billed by bits or while roaming. We highly recommend securing your HotSpot by upgrading to JoikuSpot Premium and setting the encryption and password on.

5. Connecting your laptop to internet via JoikuSpot (Windows 7)

1. Click on "Wireless networks" on your Windows 7 laptop and select JoikuSpot Wi-Fi network. Click "Connect" and you will connect your laptop to the Internet via your JoikuSpot WiFi network.



Type the encryption key you have set under JoikuSpot settings.

2. Open your web browser and start surfing.
3. Please note that your HotSpot (JoikuSpot Light) is an open wifi hotspot visible to anyone within close proximity. Therefore anyone nearby with WiFi can access your JoikuSpot 3G internet and consume mobile data under your mobile data subscription. Please pay special attention to this if you are billed by bits or while roaming. We highly recommend securing your HotSpot by upgrading to JoikuSpot Premium and setting the encryption and password on.

6. Connecting other devices/gadgets to internet via JoikuSpot

You can connect multiple devices in parallel to JoikuSpot Internet, and connection is not limited to laptops. You can eg. connect your WiFi capable iPod or iPad or WiFi camera to internet using JoikuSpot as a gateway.

Connecting other WiFi devices is easy as well. Take your device (below example iPod), go to WiFi settings, scan the WiFi networks, discover your JoikuSpot internet WiFi network and click "Connect". Your iPod is connected. Next open your Safari browser and start surfing or use any internet services available in your iPod through the JoikuSpot Internet access. Similar connection as in this iPod example applies to iPod Touch, iPhone and iPad.



iPad: Watch the video of how to connect iPad to JoikuSpot Internet:

<http://www.youtube.com/watch?v=dfSy3VNgoH4>

For other devices (e.g. mobile phones, WLAN cameras), please refer to your device user manual on how to discover WiFi networks and connect to them.

7. LANDING PAGE:

When you connect your laptop or iPad to internet via JoikuSpot Light and start surfing the web with your web browser, you will discover that the first browser web page you see looks like this:



This is the defaulted landing page where JoikuSpot Light lands you at the start of your web session. By upgrading to JoikuSpot Premium Edition you can define whether you want to be routed to Joiku landing page or not. However, Joiku landing page is intended to be useful for users. In the landing page, you can e.g. easily detect whether you have the latest JoikuSpot Light Edition in use, and if there is an upgrade available or click on to Joiku portal or social medias to stay tuned into what is going on in the world of tethered WiFi.

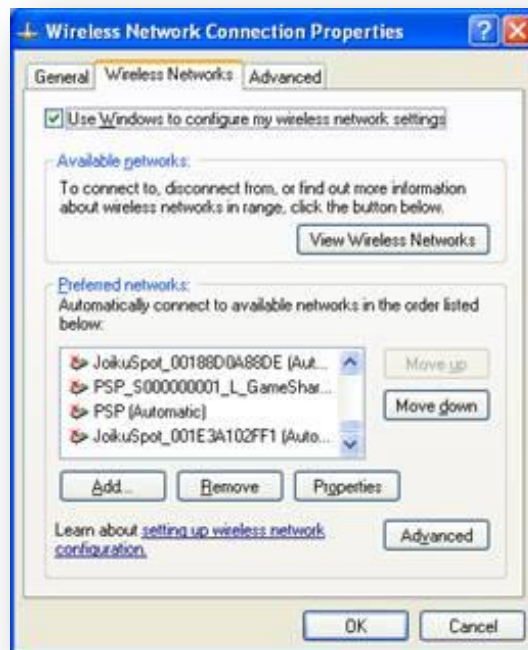
8. Tips and tricks

A) WLAN Ad hoc mode in some laptops

Ad Hoc WLAN support is required in connecting device (e.g. laptop or iPad). This is due to Symbian OS limitation for only supporting Ad Hoc WLAN connectivity for the moment. Infrastructure WLAN mode is not supported in current Symbian OS releases.

Some laptops (depends of the laptop vendor) may require that you manually allow “Computer-to-computer (ad-hoc) networks only” for JoikuSpot. This is NOT the normal case, but you may try it if the connection does not work automatically.

Click on the Wireless network icon > View Wireless networks > Change Advanced Settings > Advanced. Choose “Computer-to-computer (ad-hoc) networks only”.



B) Wifi Power save mode

If you want to improve the Wifi functionality in your phone, please set the Power saving mode to 'Disabled'. Go Menu > Settings > Connectivity > WLAN.

Click Options > Settings. In the settings you can disable the Power saving mode.



C) Other useful tips

NOTE: Connectivity is not limited to laptops; you can also connect other WLAN devices, as long as they support ad hoc WLAN connectivity. Such devices are for example iPads, iPods, other mobile phones and WLAN digital cameras. Note that you can also connect multiple devices in parallel.



D) Most common solutions for issues related to Joikuspot use

- Check that you have [the latest firmware in your phone](#) with proper WLAN drivers.
- Check that you are using the normal INTERNET access point for JoikuSpot; WAP, MMS, etc. access points will not work. Operator's Internet access point is typically called "Operator X Internet".
- Check that you have only one JoikuSpot installation on your phone. If not, remove earlier ones, especially betas.
- Check that your laptop or other connecting device (e.g. iPod, WLAN camera) allows ad hoc WLAN connections.
- Check that there is no firewall or other antivirus program in your phone preventing the connection creation.
- Check that in your phone there is no other program that reserves the WLAN for itself (e.g. Email, SIP, VoIP, Messenger client).
- Check that there is no other interfering WLAN basestation in very close proximity with your JoikuSpot device.

JoikuSpot is a copyright © of Joikusoft Oy Ltd.

JoikuSpot and Joiku are registered trademarks of Joikusoft Oy Ltd.

All rights reserved.

For more information contact support@joikusoft.com or visit our web pages at

www.joikusoft.com

www.joikuspot.com

Mobile Sites: (for access with a mobile phone browser)

JoikuSpot Premium: www.joikushop.com/mobile

JoikuSpot Light: www.joikuspot.com/light

Joikusoft in Twitter:

www.twitter.com/joikuspot (support)

www.twitter.com/joikusoft (company tweets)

Joikusoft in Facebook:

<http://www.facebook.com/pages/Joikucom/6178302786>